



Quick Start Guide

ADSL 202ER

ETHERNET ADSL ROUTER MODEM

Before You Start...

- 1. Make sure your PC is equipped with an Ethernet network card.**
- 2. Verify that the following items came with your DSL Kit:**



A. VisionNet 202ER



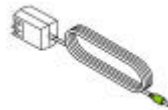
C. Ethernet Cable
(BLUE)



E. CD (Manual)



B. ADSL Line Cable
(WHITE)



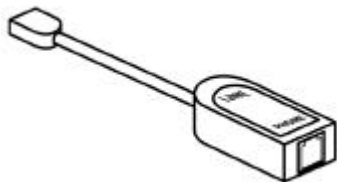
D. Power Adaptor
(GREEN)



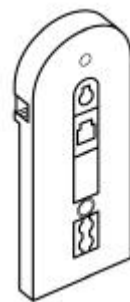
F. Quick Start Guide

Note that external in-line and wall-mount filters are sold separately. If you did not order a kit, your package will not contain filters.

Follow the instructions provided in this guide for basic filter installation. If you need further assistance installing them, please contact your service provider.



External In-line Filter



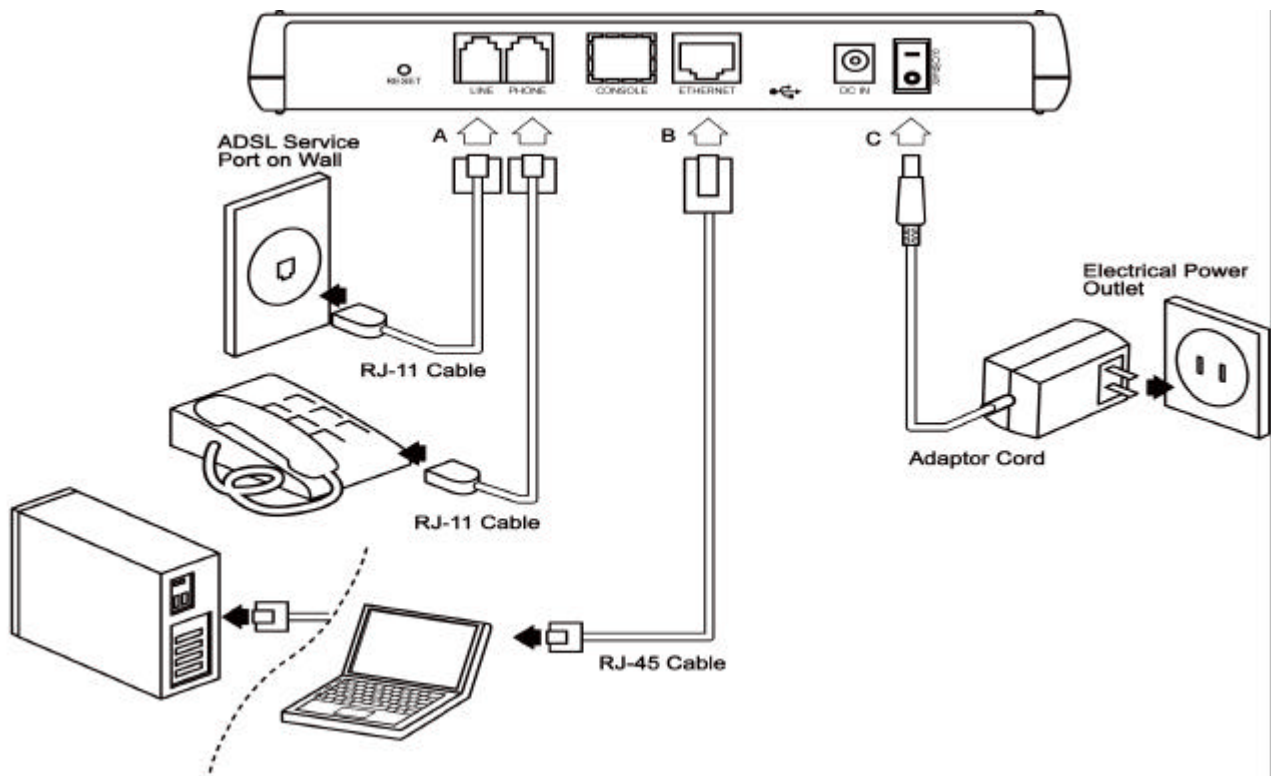
Wall-mount Filter

You may need the following values from your ISP to configure your PC and 202ER.

- * Your ISP's service model (I.e, PPPoE, PPPoA or Static/Dynamic IP)
- * Your Username and Password
- * Your WAN IP Address, Subnet mask, DNS servers and WAN Gateway

Step 1. Connecting the Hardware

- Connect one end of the RJ-11 telephone cable (WHITE) to the 202ER's "**LINE**" port and the other end to the ADSL service port (Wall Jack).
- Connect one end of the RJ-45 Ethernet cable (BLUE) to the 202ER's "**ETHERNET**" port and the other end to the PC's Ethernet port.
- Plug the jack from the power supply adapter (GREEN) into the 202ER's "**DC IN**" Port and the other end to your power outlet. Turn on the power switch.



Note: For your convenience, the 202ER has a built in internal filter. You may plug your phone directly into the "Phone" port of the 202ER.

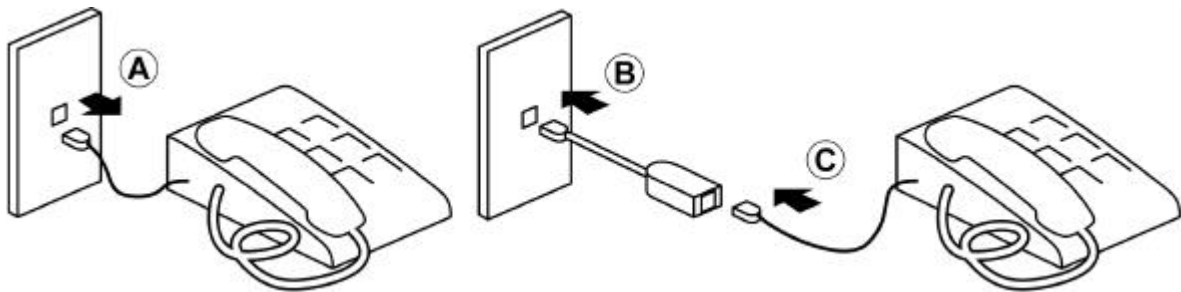
STEP 2. Installing External Filter

Non-ADSL devices such as fax machines, answering machines or phones that share the same phone number as your DSL account require a filter. The filter prevents modem noise from disrupting regular telephone service. Filters can be in the form of a stand-alone external in-line filter or a wall-mount filter.

External In-line Filter

For each non-ADSL device that shares a DSL phone number:

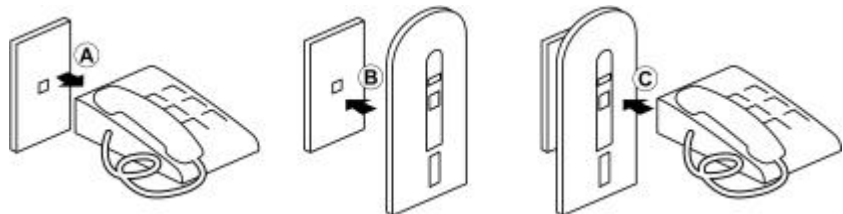
- a. Unplug the non-ADSL device's cord (such as phone) from the phone jack.
- b. Plug the filter into the phone jack.
- c. Plug the non-ADSL device's cord into the filter.



Wall-mount Filter

If you use a wall mount phone:

- a. Remove the phone.
- b. Connect the wall-mount filter to the wall plate.
- c. Reconnect the phone.

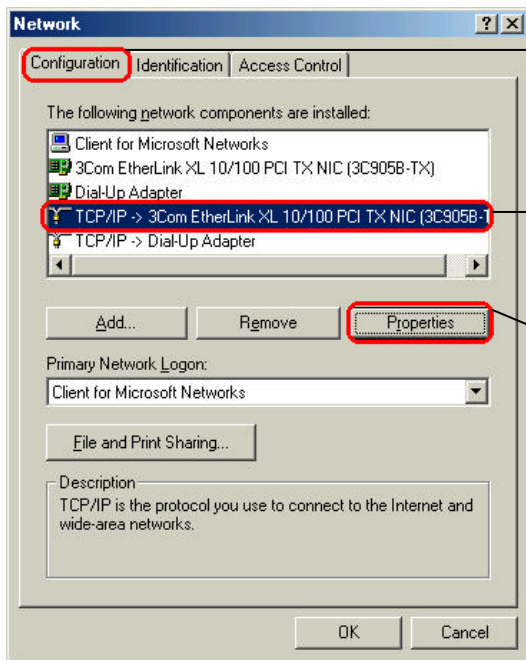


STEP 3. Configuring Your PC to Access the 202ER

You can access the 202ER by setting your PC as a DHCP client. To do this, you will need to set up the TCP/IP properties of your network adapter to obtain an IP address from a DHCP Server.

Note: These procedures will only work in Windows 95, 98, 98SE, or ME. If you are using Windows 2000, Windows XP, Windows NT or a MAC, please refer to the user manual or check your network adapters documentation.

- a. Right-click the **Network Neighborhood** icon and select **Properties**.
- b. When the **Network** window appears, select the Configuration tab. Select TCP/IP \neq NIC (your Network Interface Card). Click the **Properties** button.

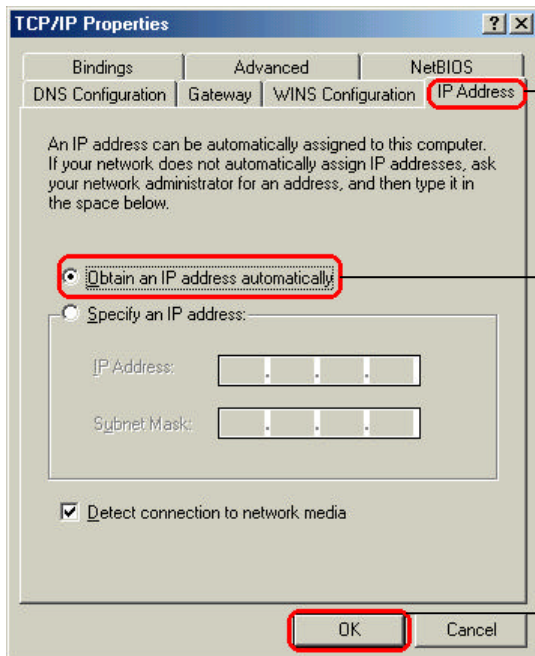


1. Select the **Configuration** tab.

2. Select **TCP/IP** properties for the network adapter you will be using.

3. Click **Properties**.

c. When the **TCP/IP Properties** window appears, select the IP Address tab. Select **Obtain an IP address automatically** and verify there is no gateway defined. Click **OK**.



1. Select the **IP Address** tab.

2. Select **Obtain an IP address automatically**.

3. Click **OK**.

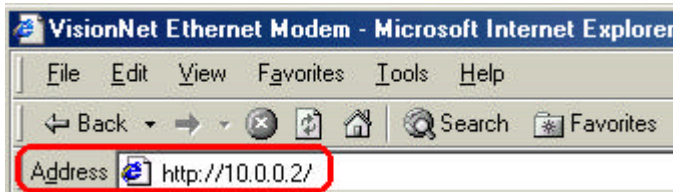
d. You will be asked to restart your computer to complete the settings. Click **Yes** to restart your computer.

STEP 4. Configuring the 202ER Router

You can use your PC's web browser software to access the 202ER's configuration pages.

Accessing the 202ER

- a. Start your web browser and type **10.0.0.2** or **dq.setup** in the web address field.



Type **10.0.0.2** in the web Address field.

↓
This value is factory default. Your ISP may provide a different value. Please follow your **ISP's** instruction.

- b. When the Enter Network Password windows appears, type **"admin"** in the **User Name** field and **"visionnet"** in the **Password** field.



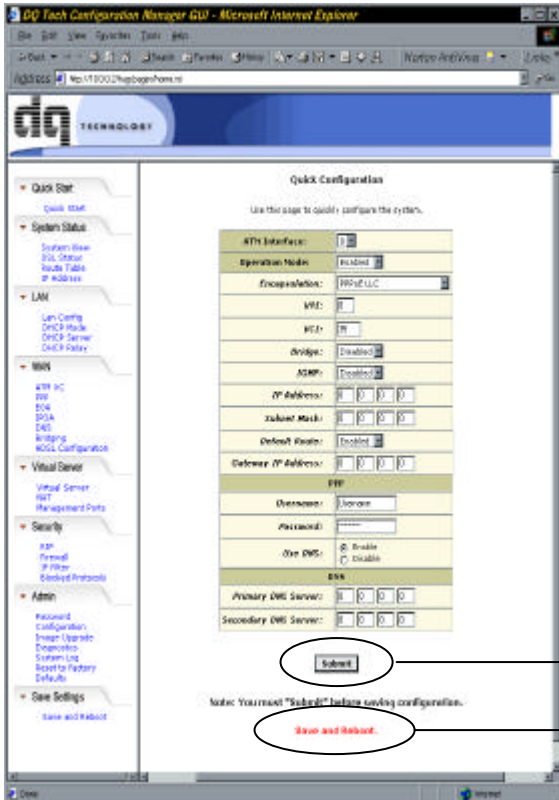
→ Type **admin**.

→ Type **visionnet**.

→ Click **OK**.

Configuring the Quick Setup Page

- a. Click the **Quick Start** option on the 202ER's configuration page.
b. Check with your ISP to configure the Quick Setup page or refer to the chart below. Note that the chart lists the most common setup procedures; however, your ISP may use different settings. Please check with your ISP or user's manual.
c. After you have configured your modem, press the **"Submit"** button and then the **"Save and Reboot"** link.



* After you configure your modem, press the **“Submit”** button and then **“Save and Reboot”**

“Submit”

“Save and Reboot”

Options	PPPoE	PPPoA	Static IP	*Dynamic IP
ATM Interface	0	0	0	0
Operation Mode	Yes	Yes	Yes	Yes
Encapsulation	PPPoE-LLC	PPPoA-VCMUX	1483 Bridged IP LLC	1483 Bridged IP LLC
VPI	Provided by ISP	Provided by ISP	Provided by ISP	Provided by ISP
VCI	Provided by ISP	Provided by ISP	Provided by ISP	Provided by ISP
Bridge	Disabled	Disabled	Disabled	Disabled
IGMP	N/A	N/A	N/A	N/A
IP address	N/A	N/A	Provided by ISP	N/A
Subnet Mask	N/A	N/A	Provided by ISP	N/A
Default Route	Enabled	Enabled	Enabled	Enabled
Gateway IP Address	N/A	N/A	Provided by ISP	N/A
PPP:				
Username	Provided by ISP	Provided by ISP	N/A	N/A
Password	Provided by ISP	Provided by ISP	N/A	N/A
Use DNS	Enabled	Enabled	Disabled	Enabled
DNS:				
Primary DNS	N/A	N/A	Provided by ISP	N/A
Secondary DNS	N/A	N/A	Provided by ISP	N/A

*You must enable DHCP in the EOA menu listed below the WAN tab.



TM