



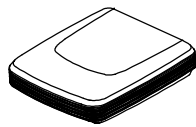
## Quick Start Guide

### Before You Start...

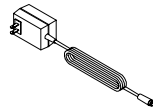
Please make sure your PC is equipped with the following.

- ✓ OS Platform with TCP/IP support
- ✓ 10 or 100 BT Ethernet port
- ✓ 32 Mb RAM or more

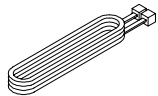
Verify that the following items came with your DSL Kit:



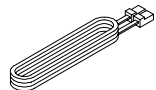
VisionNet 200ES



Power Adapter



RJ-11 Phone Cable

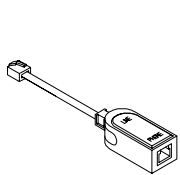


RJ-45 Ethernet cable

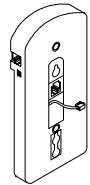


Quick Start Guide

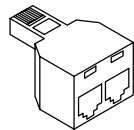
External in-line and wall mount filters and two-way adapter are sold separately. If you did not order a kit, your package will not contain filters. Follow the instructions provided in this guide for basic installation. If you need further assistance installing them, please contact your service provider.



External In-line Filter



Wall-mount Filter



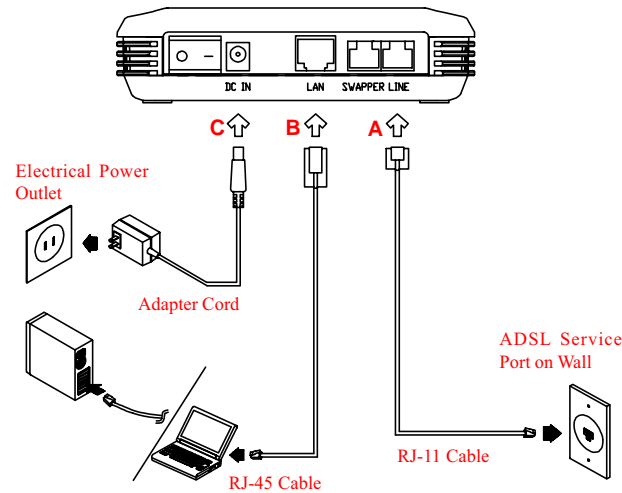
Two-way Adapter

You will need the following values from your ISP to configure your PC and DSL Router.

- ✓ Your ISP's service model (i.e. 1483 Bridged IP LLC)
- ✓ Your VPI and VCI
- ✓ Your IP Address and Subnet Mask

### Step 1 Connecting the Hardware

- A.** Connect one end of the RJ-11 telephone cable to the Visionnet 200ES's **LINE** port and the other end to the ADSL service port (Wall Jack).
- B.** Connect the RJ-45 Ethernet cable to the **LAN** port of the VisionNet 200ES and the other end to the PC's Ethernet port.
- C.** Plug the coaxial jack from the electric power supply adapter into the VisionNet 200ES's **DC IN** port and the other end to the main outlet. Turn on the power switch.



**Note:** The **LINE** port and **SWAPPER** port cannot be used at the same time. If the **ADSL** LED doesn't become solid in 2 minutes and you have verified a secure RJ-11 connection on the **LINE** port and wall jack, unplug the RJ-11 from the **LINE** port and reconnect it to the **SWAPPER** port. In most cases, the **LINE** jack is utilized in typical ADSL connections. In some areas, this may not be the case, so DQ Technology provides an alternative pin configuration (the **SWAPPER** port) in case the standard was changed at some point in your wall jack.

### Step 2 Installing External Filter

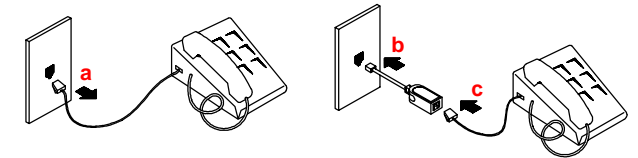
Non-ADSL devices such as fax machines, answering machines or phones that share the same phone number as your DSL account require a filter. The filter prevents modem noise from disrupting regular telephone service. Filters can be in the form of a stand-alone filter or a wall-mount filter.

A filter can also be plugged into a two-way adapter if your DSL modem will share the same phone jack with another device.

#### External In-line Filter

For each non-ADSL device that shares a DSL phone number:

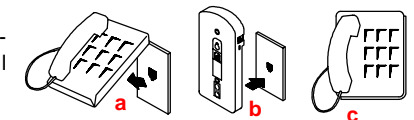
- a.** Unplug the non-ADSL device's cord (such as phone) from the phone jack.
- b.** Plug the filter into the phone jack.
- c.** Plug the non-ADSL device's cord into the filter.



#### Wall-mount Filter

If you use a wall mount phone:

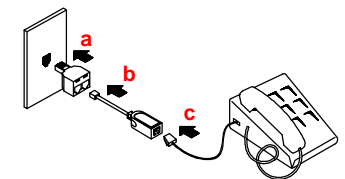
- a.** Remove the phone.
- b.** Connect the wall-mount filter to the wall plate.
- c.** Reconnect the phone.



#### Two-way Adapter

If your DSL modem and another non-ADSL device will share the same phone jack, install a two-way adapter:

- a.** Plug adapter into the phone jack.
- b.** Plug a filter into one of the sockets of the two-way adapter. The other socket will be used to connect the DSL cable.
- c.** Plug the telephone (or other non-ADSL device) cord into the filter.
- d.** The other socket on the two-way adapter should be used to connect directly into your DSL modem.

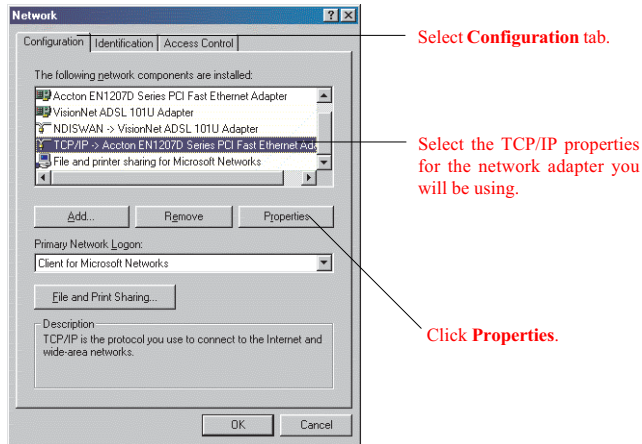


Continued on back...

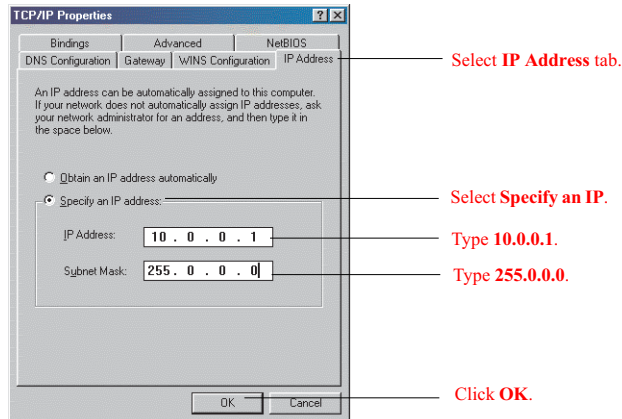
## Step 3 Configuring Your PC to Access the 200ES

To access the configuration pages, you must set your PC's IP address to **10.0.0.1** and Subnet mask to **255.0.0.0**.

- Right-click the **Network Neighborhood** icon and select **Properties**.
- The **Network** window appears, select the **Configuration** tab, then select **TCP/IP-->Network Interface Card**. Click the **Properties** button.



- The **TCP/IP Properties** window will appear. Select the **IP Address** tab, then select the **Specify an IP address**. Enter the **IP Address** as **10.0.0.1** and **Subnet Mask** as **255.0.0.0**, click **OK**.



- You will be asked to restart your computer to complete the settings. Click **Yes** to restart your computer.

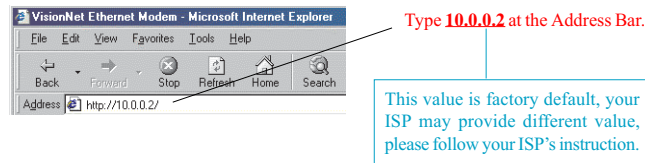
**Note:** These procedures will only work in Windows 95, 98, 98SE, or Me. If you are using Win 2000, Win XP, Win NT or a MAC, please refer to the user manual or check your network adapters documentation.

## Step 4 Configuring the 200ES Modem

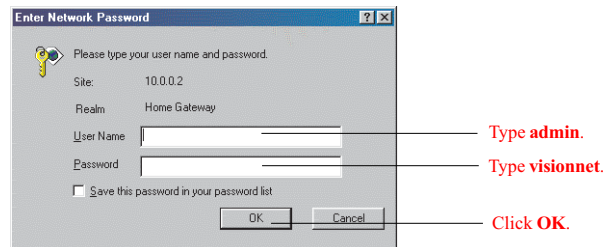
You can use your PC's web browser software to access the 200ES's configuration pages. The default address of the modem is **10.0.0.2**.

### Accessing the 200ES

- Start your web browser and then type **10.0.0.2** at web address.



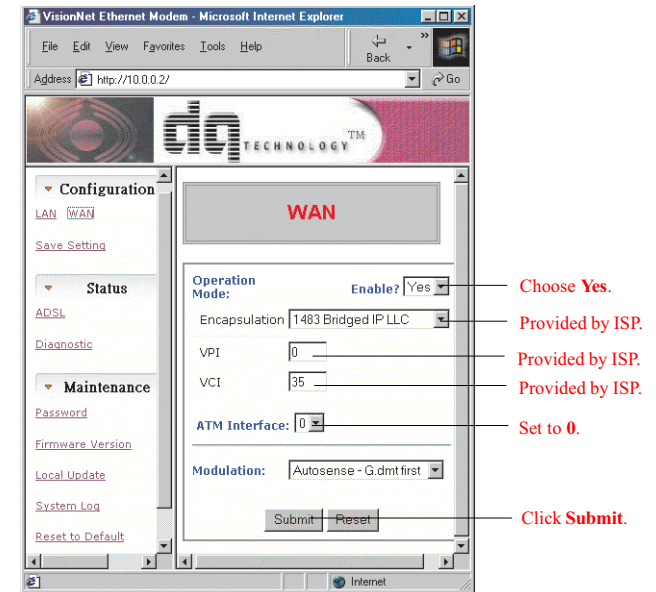
- The **Enter Network Password** window appears, type **admin** in **User Name** and **visionnet** in **Password**.



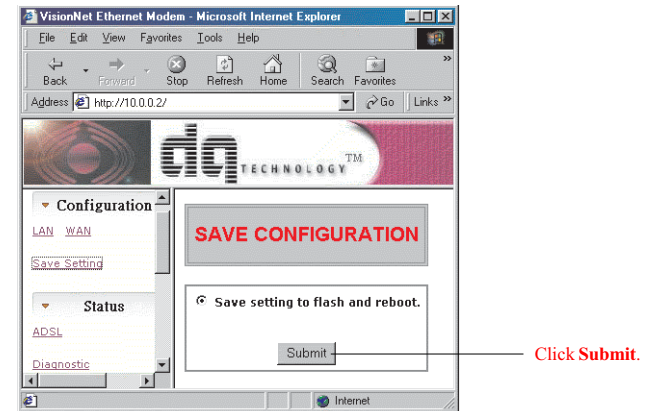
### Quick setup the Configuration page

The 200ES supports 1483 Bridged IP LLC and 1483 Bridged IP VC-MUX two Link Protocols to make the Internet connection, please configure your 200ES and PC according to the Link Protocol provided by your ISP.

- Click the **WAN** option in the **Configuration** menu.



- Click **Save Setting** option in the **Configuration** menu.



- You will need to change the IP configuration of your PC. Please refer to the user manual or contact your ISP for details on how to setup your PC.



www.dqusa.com

032002B-E1-DQT COPYRIGHT © 2002 DQ Technology Inc. VisionNet ADSL 200ES