



ADSL Ethernet Router

Quick Installation Guide

SSABR-B/SSABR-BU

Copyright

All rights reserved. No part of this document may be reproduced in any form or by any means without written permission from the product manufacturer.

Changes are periodically made to the information in this document. They will be incorporated in subsequent editions. The product manufacturer may make improvements and/or changes in the product described in this document at any time.

Getting Started

This quick guide provides a quick and easy way to install and configure the SSABR-B/SSABR-BU ADSL modem/router to match what you need.

The major functions of the SSABR-B/SSABR-BU ADSL modem/router are performed via Ethernet 10/100Base-T network interface. Your computer has to installed an Ethernet NIC card and set up the TCP/IP protocol before start to using your ADSL Ethernet Router.

Factory Default Settings

LAN IP address:	192.168. 7.1
Subnet mask:	255.255.255.0
VPI:	0
VCI:	35
Encapsulation type:	RFC 1483 Bridged IP LLC

IMPORTANT:

Please **DO NOT** change default values if you are unfamiliar with these settings, try using the device without modification, or contact your DSL service provider for assistance. We strongly recommend that you contact your DSL service provider prior to change the default configuration.

LED Indicators

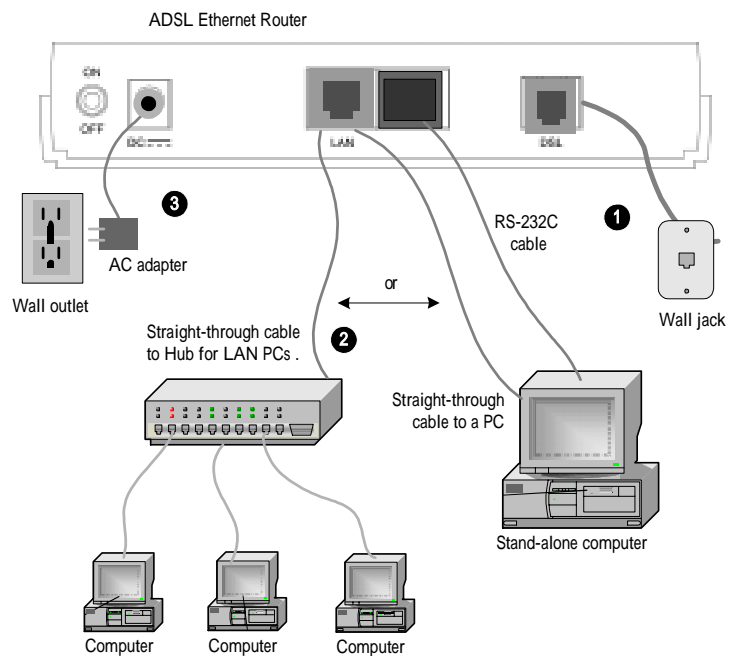
You can monitor the LEDs during operation. Following table shows the Router status LEDs and identifies what each LED light means.

Function	Behavior	Definition
<i>POWER</i>	Dark	Power off
	Light	Power on
<i>LINK</i> (<i>DSL</i>)	Dark	Power off
	Flashing	System training in progress
	Light	Ethernet Link is OK
<i>ACT</i> (<i>DSL</i>)	Dark	Local network link absent or power off
	Flashing	Wireline
	Light	Local network link established
<i>LINK</i> (<i>LAN</i>)	Dark	No data activity or power off
	Flashing	Data activity occurs
	Light	ADSL Link is up
<i>10/100M</i> (<i>LAN</i>)	Light	100Base-T is running

If the LEDs illuminate as expected, test your Internet connection from a LAN computer, Open your web browser, and type the URL of any external website(such as <http://www.yahoo.com>). The LED labeled ACT(XDSL) should be blinking rapidly and may appear solid as the device connected to the site.

Hardware Installation

1. Connect the ADSL cable and optional telephone
2. Connect the Ethernet cable
3. Attach the power connector
4. Turn on the SSABR-B/SSABR-BU ADSL modem/router and power up your system.



1.1 Configure your Computer

1.1.1 Obtain an IP address from the ADSL modem/router

You do not need to specify an IP address when configuring TCP/IP properties. If your computer stands alone and is set up to obtain an IP address automatically, you can move on to section 1.2-Web Configuration.

1.1.2 Manually assign a fixed IP address to your computer

If you prefer to assign an IP address manually, use **192.168.7.x**(x is any number between **2** and **254**) and subnet mask **255.255.255.0**. Specify the gateway as **192.168.7.1**. Windows specific instructions follow:

For Windows 95/98/ME:

From **Control Panel**, double click **Network**. Scroll down and highlight **TCP/IP** (your network card.) Click **Properties**.

Select the **IP Address** tab. Enter **192.168.7.x** (x is any number between **2** and **254**). This is the IP address assigned to your computer. **Subnet Mask** is **255.255.255.0**.

Select the **Gateway** tab. Enter the Router's IP address **192.168.7.1** and click **Add**.

Click **OK** & then **OK** to finish. You may be prompted for the Windows CD and then be asked to restart. Answer **Yes** to restart the computer.

For Windows 2000/XP:

From Control Panel double click **Network Connections**. Open local Area Connections and click **Properties**. Double click **Internet Protocol(TCP/IP)**. Select **Use the following IP address**.

Enter **192.168.7.x** (x is any number between **2** and **254**). This is the IP address assigned to your computer. Subnet Mask is **255.255.255.0**

Enter the Router's IP **192.168.7.1** as the **Default gateway**.

Click **OK** to finish.

You have now finished configuring your computer. Restart your computer, if necessary.

1. 2 Web-Configuration

Web-Configuration is designed to work best with Microsoft Internet Explorer® version 5.0, Netscape Navigator® version 4.7, or later versions.

Open your web browser and fill in the following URL address in the web address (or location) field, and press <Enter> key.

URL address: <http://192.168.7.1> .

You will now see the following screen :

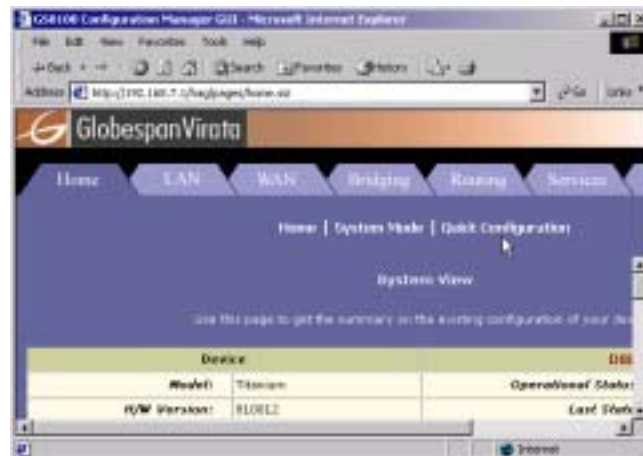
1. For the User Name, type "**DSL**" (no "" and the word is case sensitive).
2. For the Password, type "**DSL**" (no "" and the work is case sensitive).
3. Click on the **OK** button.



You will now see the following screen:



1. Click **Quick Configuration** at the top of the screen.



You will now see the following screen:

Quick Configuration	
Use this page to quickly configure the system.	
ATM Interface:	0 -
Operation Mode:	Enabled -
Encapsulation:	1483 Bridged IP LLC -
VPI:	0
VCI:	35
Bridge:	Enabled -
IGMP:	Disabled -
IP Address:	0 0 0 0
Subnet Mask:	0 0 0 0
Use DHCP:	<input type="radio"/> Enable <input checked="" type="radio"/> Disable
Default Route:	Disabled -
Gateway IP Address:	0 0 0 0
PPP	
Username:	GSPN
Password:	
Use DNS:	<input checked="" type="radio"/> Enable <input type="radio"/> Disable
DNS	
Primary DNS Server:	0 0 0 0
Secondary DNS Server:	0 0 0 0
<input type="button" value="Submit"/> <input type="button" value="Delete"/> <input type="button" value="Cancel"/> <input type="button" value="Help"/>	

1.2.1 RFC 1483 Bridged Mode (MPoA)

1. Beside ATM Interface, you can setup up to 8(0~7) interface. The default interface number is **0**.
2. Beside Operation Mode, please choose **Yes** to enable this interface.
3. Beside Encapsulation, use the drop down menu and select **1483 Bridged IP LLC**. If your encapsulation is VC multiplexing, choose **1483 Bridged VC-Mux**
4. Beside VPI, enter in a value (please consult your ISP for your VPI. Factory default is **0**).
5. Beside VCI, enter in a value (please consult your ISP for your VCI. Factory default is **35**).
6. Beside Bridge, use the drop down menu and select **Enabled**.
7. Beside IGMP, use the drop down menu and select **Disabled** to accept multicast.
8. Beside Use DHCP, place the black dot beside **Disable**.
9. Beside Default Route, use the drop down menu and select **Disabled**
10. **DO NOT MAKE ANY OTHER CHANGES.**
11. Click on the Submit button.
12. Click the Admin tab, and then click Commit&Reboot in the task bar.
13. Click to save changes to permanent storage.
14. Turn off SSABR-B/SSABR-BU, wait 5 seconds and then turn it back on.

1.2.2 RFC 1483 Routed Mode (MPoA)

1. Beside ATM Interface, you can setup up to 8(0~7) interface. The default interface number is **0**.
2. Beside Operation Mode, please choose **Yes** to enable this interface.
3. Beside Encapsulation, use the drop down menu and select **1483 Routed IP LLC**. If your encapsulation is VC multiplexing, choose **1483 Routed IP VC-Mux**.
4. Beside VPI, enter in a value (please consult your ISP for your VPI. Factory default is **0**).
5. Beside VCI, enter in a value (please consult your ISP for your VCI. Factory default is **35**).
6. Beside Bridge, use the drop down menu and select **Disabled**.
7. Beside IGMP, use the drop down menu and select **Disabled** to accept multicast.

-
8. Beside Use DHCP, place the black dot beside **Enable**.
 9. Beside Default Route, use the drop down menu and select **Enabled**
 10. **DO NOT MAKE ANY OTHER CHANGES.**
 11. Click on the Submit button.
 12. Click the Admin tab, and then click Commit&Reboot in the task bar.
 13. Click to save changes to permanent storage.
 14. Turn off SSABR-B/SSABR-BU, wait 5 seconds and then turn it back on.

1.2.3 RFC 1577 Routed Mode (IPoA)

1. Beside ATM Interface, you can setup up to 8(0~7) interface. The default interface number is **0**.
2. Beside Operation Mode, please choose **Yes** to enable this interface.
3. Beside Encapsulation, use the drop down menu and select **1483 Routed IP LLC(1577)**.
4. Beside VPI, enter in a value (please consult your ISP for your VPI. Factory default is **0**).
5. Beside VCI, enter in a value (please consult your ISP for your VCI. Factory default is **35**).
6. Beside Bridge, use the drop down menu and select **Disabled**.
7. Beside IGMP, use the drop down menu and select **Disabled** to accept multicast.
8. Beside IP Address, enter your static IP address get from DSL service provider.
9. Beside Subnet Mask, enter your subnet information get from DSL service provider.
10. Beside Use DHCP, place the black dot beside **Enable**.
11. Beside Default Route, use the drop down menu and select **Enabled**
12. Beside Gateway IP, enter your Gateway IP Address get from DSL service provider.
13. **DO NOT MAKE ANY OTHER CHANGES.**
14. Click on the Submit button.
15. Click the Admin tab, and then click Commit&Reboot in the task bar.
16. Click to save changes to permanent storage.
17. Turn off SSABR-B/SSABR-BU, wait 5 seconds and then turn it back on.

1.2.4 RFC 2516 Routed Mode (PPPoE)

1. Beside ATM Interface, you can setup up to 8(0~7) interface. The default interface number is **0**.
2. Beside Operation Mode, please choose **Yes** to enable this interface.
3. Beside Encapsulation, use the drop down menu and select **PPPoE LLC**. . If your encapsulation is VC multiplexing, choose **PPPoE VC-Mux**.
4. Beside VPI, enter in a value (please consult your ISP for your VPI. Factory default is **0**).
5. Beside VCI, enter in a value (please consult your ISP for your VCI. Factory default is **35**).
6. Beside Bridge, use the drop down menu and select **Disabled**.
7. Beside IGMP, use the drop down menu and select **Disabled** to accept multicast.
8. Beside Use DHCP, place the black dot beside **Disable**.
9. Beside Default Route, use the drop down menu and select **Enabled**.
10. Beside Username(case sensitive), enter in your User Name and your may also need to enter in your domain name.
11. Beside Password(case sensitive), enter in your password.
12. Beside Use DNS, place the black dot beside Enable.
13. **DO NOT MAKE ANY OTHER CHANGES.**
14. Click on the Submit button.
15. Click the Admin tab, and then click Commit&Reboot in the task bar.
16. Click to save changes to permanent storage.
17. Move on section 2.1-ADSL Connection.

1.2.5 RFC 2364 Routed Mode (PPPoA)

1. Beside ATM Interface, you can setup up to 8(0~7) interface. The default interface number is **0**.
2. Beside Operation Mode, please choose **Yes** to enable this interface.
3. Beside Encapsulation, use the drop down menu and select **PPPoA LLC**. . If your encapsulation is VC multiplexing, choose **PPPoA VC-Mux**.
4. Beside VPI, enter in a value (please consult your ISP for your VPI. Factory default is **0**).
5. Beside VCI, enter in a value (please consult your ISP for your VCI. Factory default is **35**).
6. Beside Bridge, use the drop down menu and select **Disabled**.

-
7. Beside IGMP, use the drop down menu and select **Disabled** to accept multicast.
 8. Beside Use DHCP, place the black dot beside **Disable**.
 9. Beside Default Route, use the drop down menu and select **Enabled**.
 10. Beside Username(case sensitive), enter in your User Name and your may also need to enter in your domain name.
 11. Beside Password(case sensitive), enter in your password.
 12. Beside Use DNS, place the black dot beside Enable.
 13. **DO NOT MAKE ANY OTHER CHANGES.**
 14. Click on the Submit button.
 15. Click the Admin tab, and then click Commit&Reboot in the task bar.
 16. Click to save changes to permanent storage.
 17. Move on section 2.1-ADSL Connection.

2.1 ADSL Connection

You have now successfully configured your SSABR-B/SSABR-BU ADSL. Please continue with the following steps:

Windows 95/95/ME:

1. Close all programs.
2. Click on the Start button.
3. Click on Run and in the Open field enter: **winipcfg**
4. Under Ethernet Adaptor Information, use the drop down menu to select your network card.
5. Click on the Release button and wait for about 5 seconds.
6. Click on the Renew button.
7. Close the Winipcfg program.

You have completed the configuration and installation process and you can start accessing the Internet by launching your browser.

Window 2000/XP:

1. Close all programs.
2. Click the Start button.
3. Click Run and in the Open field enter: **cmd**

4. From the prompt, type in **ipconfig/release** and then press the Enter/Return key.
5. From the prompt, type in **ipconfig/renew** and then press the Enter/Return key.
6. From the prompt, type in **exit** and then press the Enter/Return key.

You have completed the configuration and installation process and you can start accessing the Internet by launching your browser.

How to restore the factory's default settings of ADSL Ethernet Router?

If you need to reset your SSABR-B/SSABR-BU ADSL modem/router to its Factory Default Settings due to configuration issues, please follow these steps.

Step 1. Login to Web configuration first, then Click on the **Admin** tab at the top of your screen.



Step 2. Click on the **Commit & Reboot** option.



Step 3. Beside **Reboot Mode**, use the drop down menu to select **Reboot from Default Configuration**



Then click on the **Reboot** button to reboot your ADSL Ethernet Router.

Please wait 15 ~ 20 seconds for rebooting procedures, meanwhile **DO NOT** turn the power of your ADSL Ethernet Router off.

Then click **Refresh** button, which located in your browser program, to renew your browser screen.

Now, your ADSL Ethernet Router has been restored to factory's default settings successfully!